

Water Emulsion Device ISO TS 16332

FOR TESTING DIESEL FUEL FILTER WATER SEPARATION EFFICIENCY

Produces water droplet size distributions found in real diesel fuel systems (i.e. pressure and suction filters). Dedicated to the new up-to-date diesel fuel filters water removal efficiency test procedure ISO TS 16332 Annex A.



Orifice plates

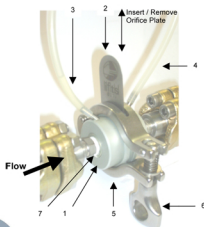


Aperture Housing

TECHNICAL DATA

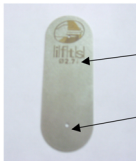
- Flow rate from 50 to 900 L/h
- Water content from 0.15 to 2%
- Water droplet size from 10 to 600 µm
- In Duralumin with anti oxidation treatment, standard Connection size 3/8" BSP
- Free: 5 extra aperture plates

IN LINE APERTURE HOUSING



Connect the aperture housing on a flexible line with Teflon tape. Unscrew 3 or 4 times. Put the plate from the base of orifice housing. Screw on. Connect pressure lines.

ORIFICE PLATE



Printed orifice diameter

Orifice

Orifice size is printed the external face

SPARE PARTS

- Orifice Plates: 2 unmarked; 3 marked



IFTs Inc., USA

200 Pond Avenue
Middlesex, NJ 08846
USA

Tel: (732)-629-7548

Fax: (732)-629-7556

Email: info@ifts-usa.com

<http://www.ifts-usa.com>